

**SAVILE ROW**  
CUSTOM TAILORS  
*Bangkok*

**Shirt Styles**



Box Pleat Front



French Front



Hidden Button Front

**Collar Styles**



Narrow Spread



Medium Spread



Medium Spread, Button Down



Wide Spread



Extra Wide Spread

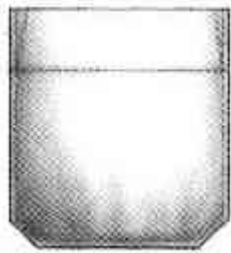


Curved Wide Spread



Round Point

### Pocket Styles



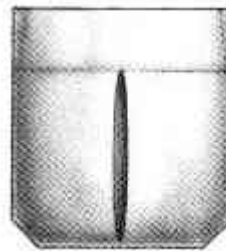
Classic



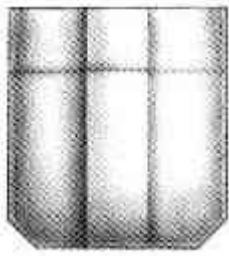
Regular Dress



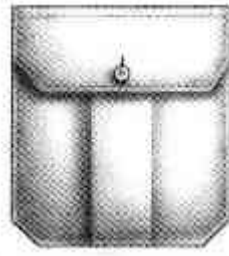
Regular Flap



Inverted Pleat

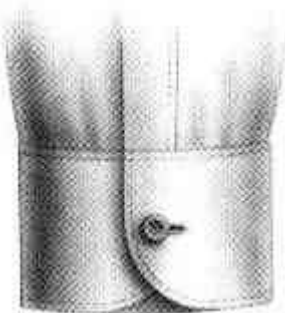


Box Pleat

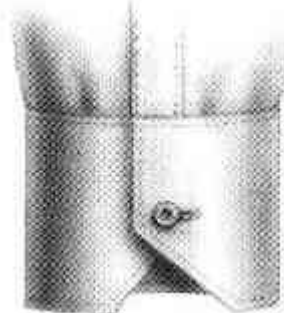


Box Pleat with Flap

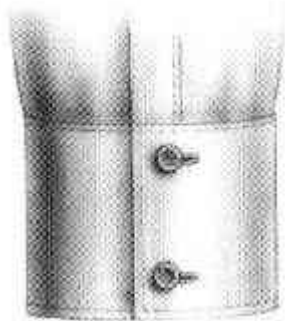
### Cuff Styles



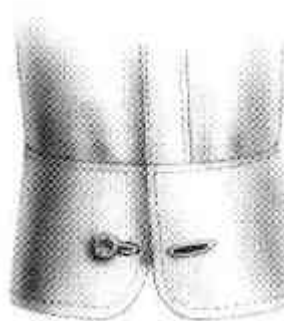
One Button Cuff



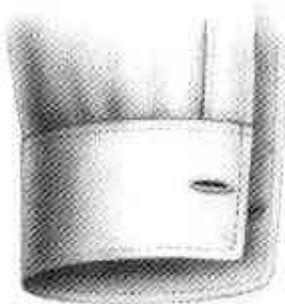
Angle Cut One Button Cuff



Two Button Cuff



Convertible Cuff



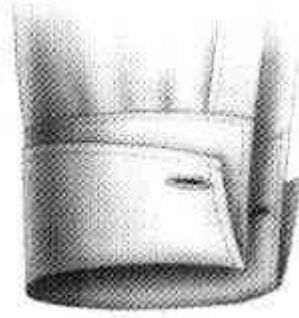
Link Cuff



French Cuff

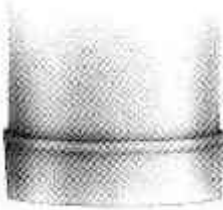


Round Corner French Cuff

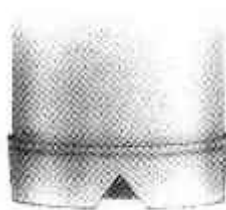


Angle Cut French Cuff

**Short Sleeve Styles**



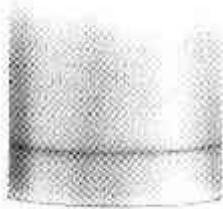
Plain Hem



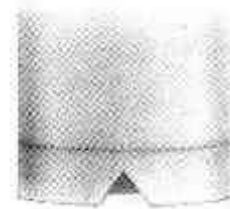
Plain Hem with Vent



False Cuff

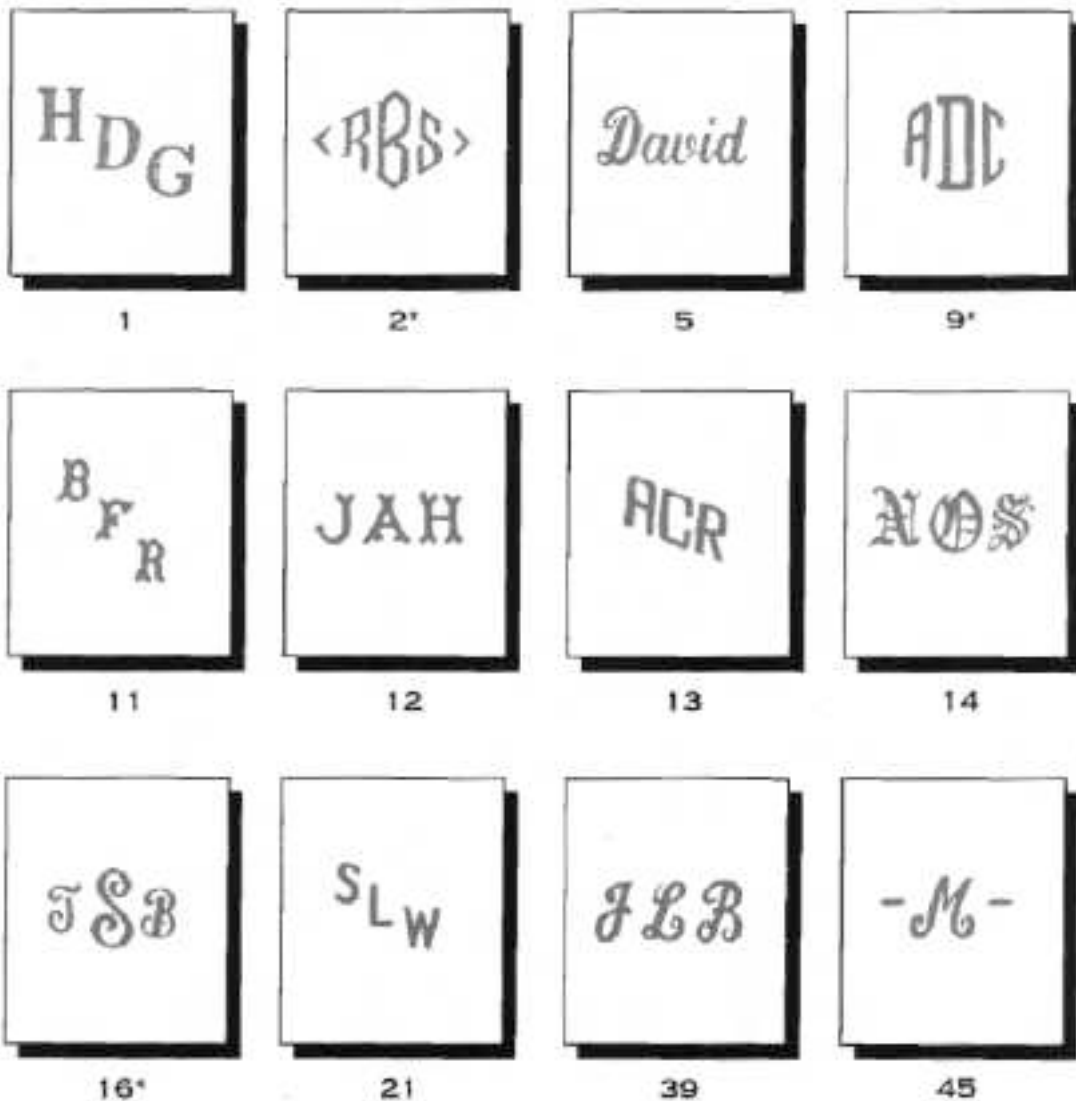


False Cuff with Vent



False Cuff with Vent and Button

## Monograms



### Instructions

- Show initials in natural order. If location is specified as pocket, initials will be done at an angle on top of left pocket. If location is specified as cuff, initials will be done straight across on edge of left cuff. Any variations must be clearly indicated on order form.
- Styles #2, #9 and #16 only, the last name is in the middle.